

2026

# Troupe INFORMATION PACK



[INFO@SALLYSSCHOOLOFPERFORMINGARTS.COM.AU](mailto:INFO@SALLYSSCHOOLOFPERFORMINGARTS.COM.AU)  
[WWW.SALLYSSCHOOLOFPERFORMINGARTS.COM.AU](http://WWW.SALLYSSCHOOLOFPERFORMINGARTS.COM.AU)

FOLLOW US





## TRAITS WE ARE LOOKING FOR

Talent, potential, commitment, accountability, sportsmanship, dedication, determination & respectfulness.

---

## ENROLMENT REQUIREMENTS

Any student wishing to participate in our 2026 Troupe teams must be enrolled in all compulsory classes for their age group. The only exception is our Hip Hop Troupe, who only need to be enrolled in Hip Hop.

All Troupe students must have a new Energetiks Lara Jacket, a SSPA t-shirt, and plain black bottoms to wear to and from competitions and performances.

---

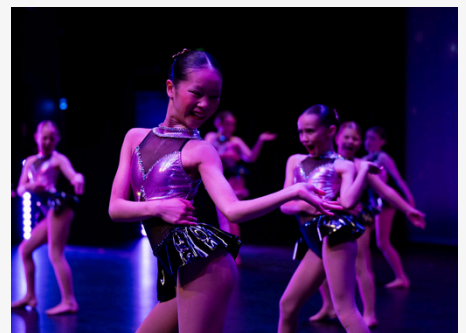
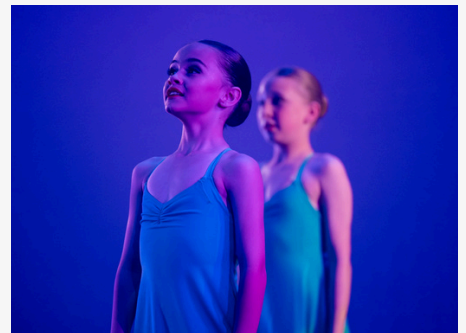
# HOW STUDENTS ARE SELECTED

Positions in our 2026 Troupes are strictly by **invitation only**. Troupe classes are separate from general classes offered at SSPA.

Parents will receive an email advising them if their child has been invited to participate in a 2026 Troupe team. Please do not accept a position if you know your child will be unable to commit to weekly rehearsals. This includes conflicts such as birthday parties, other activities, or any planned lengthy family holidays.

Students are selected regardless of their years of experience or how long they have attended SSPA. Selections are based solely on our assessment of each student's talent and potential, and we expect invited students to respect and appreciate this opportunity.

Subsequent selection into the program after the first 12 months is not automatic and will be reassessed each year.



---

# TROUPE EXPECTATIONS

Troupes at SSPA are built on teamwork, dedication, and respect. Every student selected is an essential part of the team, and the success of the group depends on each student's commitment, as well as the support and cooperation of their families.

## COMMITMENT

Accepting a place in Troupe is a **12-month commitment**, including Term 4 after the competition season has finished. Troupe must be treated as a priority for the year, and students are expected to practise independently, retain their corrections, and maintain their choreography from week to week.

Withdrawing mid-year places a significant burden on the team, as it requires re-choreographing and replacing a student, so families **must be certain** they can uphold this commitment before accepting a position.

## ATTENDANCE

Students may miss **one Troupe class per term** for dance-related activities such as solo competitions, auditions, or workshops. Beyond this, students are expected to attend all Troupe classes, as consistent attendance is essential to the team's success. Reliable attendance ensures every student has the best opportunity to develop their skills and contributes to a positive, cohesive team environment.

## BEHAVIOUR AND COMMUNITY

At SSPA, we are proud of the positive, supportive, and passionate community we have built. Every member of the Troupe, both students and parents, contributes to maintaining this environment, helping to ensure it is welcoming, encouraging, and enjoyable for everyone.

We ask that all communication and interactions within the studio reflect **respect, kindness, and consideration**. Students and parents are expected to support their fellow dancers and avoid negative or unkind comments. Feedback and conversations should always be constructive, appropriate, and mindful of their impact on those around you.

Music, choreography, and class organisation are the responsibility of the choreographing teacher only. Even if well-intentioned, any unnecessary input from parents, guardians, or students regarding these areas **will not be accepted**. As a competition-focused Troupe, the teacher will make decisions that best serve the team and the choreography. Following this process ensures consistency, clarity, and the best possible outcome for the team as a whole.

If you have questions, concerns, or feedback, we encourage you to raise them directly with Sally and Annabelle so they can be addressed in a positive and constructive way. Focusing on your child's individual growth, and supporting them to build confidence and enjoy their dance journey, is central to fostering a positive Troupe experience.

SSPA maintains a **zero-tolerance approach to bullying or harmful behaviour**, whether by students or parents. Any breaches of this policy may result in removal from the Troupe team. By working together in a spirit of respect, encouragement, and support, we create the best possible environment for every student to thrive, grow, and enjoy their dance experience.

## PARENT-TEACHER COMMUNICATION

All communications regarding Troupe matters are to be via email only. Unless there are exceptional circumstances, personal phone calls, text messaging, or messages via social media (Facebook, Instagram, etc.) are **not an accepted form of communication**.

---

# COMPETITION UNIFORM

## ALL TROUPE TEAMS

**ALL STUDENTS ARE REQUIRED TO WEAR THE FOLLOWING UNIFORM TO AND FROM ALL TROUPE COMPETITIONS THROUGHOUT THE YEAR:**

**GIRLS TOP:** SSPA ENERGETIKS LARA JACKET WITH SSPA T-SHIRT UNDERNEATH

**GIRLS BOTTOM:** PLAIN BLACK PANTS OR BLACK DANCE 'TRASH BAG' PANTS WHICH ARE AVAILABLE FROM MOST DANCE SHOPS

**BOYS TOP:** SSPA HALF ZIP POLAR FLEECE JACKET WITH SSPA T-SHIRT UNDERNEATH

**BOYS BOTTOM:** ANY PLAIN BLACK PANTS



---

# MINI ELITE TROUPE

## CLASS AND UNIFORM REQUIRMENTS

### Required Classes

MINI ELITE TROUPE

MINI ELITE JAZZ

ACRO (EITHER FRIDAY MINI/PRIMARY OR MONDAY PRE PRIMARY ACRO) - STRONGLY ENCOURAGED

STUDENTS ARE ALSO REQUIRED TO ENROL IN THE APPROPRIATE BALLET CLASS. THIS WILL BE EITHER MONDAY PRE PRIMARY BALLET A, PRIMARY BALLET (RAD) OR GRADE 1 BALLET (RAD).

### Friday - Mini Jazz, Mini Elite Troupe, Mini Acro

**UNIFORM:** ENERGETIKS BLACK VERONICA CAP SLEEVE LEOTARD TO BE WORN WITH ENERGETIKS THEATRICAL PINK CLASSIC DANCE TIGHT - CONVERTIBLE

**SHOES:** ENERGETIKS TAN JAZZ BOOT NEOPRENE, ENERGETIKS RÉVÉLATION BALLET SHOE (CANVAS) - TECH FIT THEATRICAL PINK

**OPTIONAL:** ENERGETIKS BLACK ZARA PULL OVER

**HAIR:** HAIR TO BE WORN IN A NEAT SLICKED BUN, WITH BUN NET AND PINS. ALL HAIR ACCESSORIES MUST MATCH THE LEOTARD COLOUR

**SSPA T-SHIRTS MAY BE WORN TO AND FROM CLASS, BUT ARE NOT TO BE WORN DURING CLASS**



# PETITE ELITE TROUPE

## CLASS AND UNIFORM REQUIRMENTS

### Required Classes

PETITE ELITE TROUPE

PETITE ELITE JAZZ

PETITE/JUNIOR ELITE ACRO AND FLEX - STRONGLY ENCOURAGED

STUDENTS ARE ALSO REQUIRED TO ENROL IN THE APPROPRIATE RAD CLASS. THIS WILL BE EITHER GRADE 1 BALLET (RAD) OR GRADE 2 BALLET (RAD).

### Tuesday - Petite Jazz, Petite Elite Troupe & Acro/Flex

**UNIFORM:** ENERGETIKS BLACK CLARA LEOTARD TO BE WORN WITH BLACK CLASSIC DANCE TIGHT - FOOTLESS

**SHOES:** ENERGETIKS TAN JAZZ BOOT NEOPRENE

**OPTIONAL:** ENERGETIKS BLACK ZARA PULL OVER

**HAIR:** HAIR TO BE WORN IN A NEAT BUN, WITH BUN NET AND PINS. ALL HAIR ACCESSORIES MUST MATCH THE LEOTARD COLOUR.

**SSPA T-SHIRTS MAY BE WORN TO AND FROM CLASS, BUT ARE NOT TO BE WORN DURING CLASS**



---

# JUNIOR ELITE TROUPE

## CLASS AND UNIFORM REQUIRMENTS

### Required Classes

JUNIOR ELITE TROUPE  
JUNIOR ELITE JAZZ  
JUNIOR ELITE CONTEMPORARY  
JUNIOR ELITE BALLET  
PETITE/JUNIOR ELITE ACRO/FLEX - STRONGLY ENCOURAGED

### Tuesday - Elite Jazz, Elite Contemporary, Acro/Flex

**UNIFORM:** ENERGETIKS BLACK CLARA LEOTARD TO BE WORN WITH ENERGETIKS BLACK CLASSIC DANCE TIGHT - FOOTLESS

**SHOES:** ENERGETIKS TAN JAZZ BOOT NEOPRENE

**OPTIONAL:** ENERGETIKS BLACK ZARA PULL OVER

**HAIR:** HAIR TO BE WORN IN A NEAT BUN, WITH BUN NET AND PINS. ALL HAIR ACCESSORIES MUST MATCH THE LEOTARD COLOUR.

### Wednesday - Junior Elite Troupe, Elite Ballet

**UNIFORM:** ENERGETIKS BLACK CLARA LEOTARD TO BE WORN WITH THEATRICAL PINK CLASSIC DANCE TIGHT - CONVERTIBLE

**SHOES:** ENERGETIKS TAN JAZZ BOOT NEOPRENE, ENERGETIKS RÉVÉLATION BALLET SHOE (CANVAS) - TECH FIT THEATRICAL PINK

**OPTIONAL:** ENERGETIKS BLACK ZARA PULL OVER

**HAIR:** HAIR TO BE WORN IN A NEAT BUN, WITH BUN NET AND PINS. ALL HAIR ACCESSORIES MUST MATCH THE LEOTARD COLOUR.

**SSPA T-SHIRTS MAY BE WORN TO AND FROM CLASS, BUT ARE NOT TO BE WORN DURING CLASS.**



---

# INTER ELITE TROUPE

## CLASS AND UNIFORM REQUIRMENTS

### Required Classes

INTERMEDIATE ELITE TROUPE  
INTERMEDIATE ELITE BALLET  
INTERMEDIATE ELITE CONTEMPORARY  
INTERMEDIATE ELITE JAZZ  
INTERMEDIATE/SENIOR ELITE ACRO/FLEX - STRONGLY ENCOURAGED

### Monday - Intermediate Elite Troupe

**UNIFORM:** ENERGETIKS BLACK CLARA LEOTARD TO BE WORN WITH ENERGETIKS BLACK CLASSIC DANCE TIGHT - FOOTLESS  
**SHOES:** ENERGETIKS TAN JAZZ BOOT NEOPRENE  
**OPTIONAL:** ENERGETIKS BLACK ZARA PULL OVER  
**HAIR:** HAIR TO BE WORN IN A NEAT BUN, WITH BUN NET AND PINS. ALL HAIR ACCESSORIES MUST MATCH THE LEOTARD COLOUR

### Saturday - Elite Ballet, Elite Contemporary, Elite Jazz

THOSE STUDENTS WHO HAVE THEIR RAD CLASS ON A SATURDAY ARE REQUIRED TO CHANGE INTO THEIR BLACK LEOTARD FOR ALL ELITE INTERMEDIATE CLASSES.

**UNIFORM:** ENERGETIKS BLACK CLARA LEOTARD TO BE WORN WITH ENERGETIKS THEATRICAL PINK CLASSIC DANCE TIGHT - CONVERTIBLE. ENERGETIKS BLACK CLASSIC DANCE TIGHT - FOOTLESS CAN BE WORN OVER THE TOP FOR CONTEMPORARY AND JAZZ  
**SHOES:** ENERGETIKS RÉVÉLATION BALLET SHOE (CANVAS) - TECH FIT THEATRICAL PINK, ENERGETIKS TAN JAZZ BOOT NEOPRENE  
**OPTIONAL:** ENERGETIKS BLACK ZARA PULL OVER  
**HAIR:** HAIR TO BE WORN IN A NEAT BUN, WITH BUN NET AND PINS. ALL HAIR ACCESSORIES MUST MATCH THE LEOTARD COLOUR

**SSPA T-SHIRTS MAY BE WORN TO AND FROM CLASS, BUT ARE NOT TO BE WORN DURING CLASS**

---

# SENIOR ELITE TROUPE

## CLASS AND UNIFORM REQUIRMENTS

### Required Classes

SENIOR ELITE TROUPE  
SENIOR ELITE BALLET  
SENIOR ELITE CONTEMPORARY  
SENIOR ELITE JAZZ  
INTERMEDIATE/SENIOR ELITE ACRO/FLEX - STRONGLY ENCOURAGED

### Monday - Senior Elite Ballet

**UNIFORM:** ENERGETIKS BLACK CLARA LEOTARD TO BE WORN WITH ENERGETIKS THEATRICAL PINK CLASSIC DANCE TIGHT - CONVERTABLE  
**SHOES:** ENERGETIKS RÉVÉLATION THEATRICAL PINK BALLET SHOE (CANVAS) - TECH FIT  
**OPTIONAL:** ENERGETIKS BLACK ZARA PULL OVER  
**HAIR:** HAIR TO BE WORN IN A NEAT BUN, WITH BUN NET AND PINS. ALL HAIR ACCESSORIES MUST MATCH THE LEOTARD COLOUR

### Wednesday - Senior Elite Troupe, Elite Contemporary, Elite Jazz

**UNIFORM:** ENERGETIKS BLACK CLARA LEOTARD TO BE WORN WITH ENERGETIKS BLACK CLASSIC DANCE TIGHT - FOOTLESS  
**SHOES:** ENERGETIKS TAN JAZZ BOOT NEOPRENE  
**OPTIONAL:** ENERGETIKS BLACK ZARA PULL OVER  
**HAIR:** HAIR TO BE WORN IN A NEAT BUN OR PONY TAIL

**SSPA T-SHIRTS MAY BE WORN TO AND FROM CLASS, BUT ARE NOT TO BE WORN DURING CLASS**

---

# MUSICAL THEATRE TROUPE

## CLASS AND UNIFORM REQUIREMENTS

### Required Classes

MUSICAL THEATRE TROUPE  
MUSICAL THEATRE - PRIMARY/JUNIOR/INTERMEDIATE

### Monday - Musical Theatre Troupe

**UNIFORM:** ENERGETIKS BLACK CLARA LEOTARD TO BE WORN WITH  
ENERGETIKS BLACK CLASSIC DANCE TIGHT - FOOTLESS

**SHOES:** ENERGETIKS TAN JAZZ BOOT NEOPRENE

**OPTIONAL:** ENERGETIKS BLACK ZARA PULL OVER

**HAIR:** HAIR TO BE WORN IN A NEAT BUN, WITH BUN NET AND PINS. ALL HAIR  
ACCESSORIES MUST MATCH THE LEOTARD COLOUR

**SSPA T-SHIRTS MAY BE WORN TO AND FROM CLASS, BUT  
ARE NOT TO BE WORN DURING CLASS.**

---

# ELITE HIPHOP TROUPE

## CLASS AND UNIFORM REQUIRMENTS

### Required Classes

#### **JUNIOR/INTERMEDIATE HOP HOP TROUP**

JUNIOR/INTERMEDIATE ELITE HIP HOP TROUPE

**JUNIOR AGE:** JUNIOR HIP HOP

**INTER AGE:** INTER/SENIOR ELITE HIP HOP

#### **SENIOR HIP HOP TROUPE**

SENIOR ELITE HIP HOP TROUPE

INTER/SENIOR ELITE HIP HOP

### Tuesday - Hip Hop Troupe & Elite Hip Hop

**UNIFORM:** SSPA T-SHIRT TO BE WORN WITH ENERGETIKS CLEA SHORTS/BIKE SHORTS BLACK OR PLAIN BLACK PANTS

**SHOES:** STREET STYLE RUNNERS, ANY BRAND

**HAIR:** HAIR TO BE WORN IN A NEAT PONY TAIL

---

# ELITE TROUPE EXTENSION

## CLASS AND UNIFORM REQUIRMENTS

### Tuesday - Elite Troupe Extension

**UNIFORM:** ENERGETIKS BLACK CLARA LEOTARD TO BE WORN WITH ENERGETIKS BLACK CLASSIC DANCE TIGHT - FOOTLESS

**SHOES:** ENERGETIKS TAN JAZZ BOOT NEOPRENE

**OPTIONAL:** ENERGETIKS BLACK ZARA PULL OVER

**HAIR:** HAIR TO BE WORN IN A NEAT BUN, WITH BUN NET AND PINS. ALL HAIR ACCESSORIES MUST MATCH THE LEOTARD COLOUR

---

# COMPETITION DAYS

Competition days are an important part of the Troupe experience, and careful preparation ensures that every student can perform at their best. Parents play a vital role in supporting their child's readiness for these events.

## **ARRIVAL TIMES**

Students must arrive at the event at the requested time, usually 1 hour before their performance. Punctuality is essential, students arriving late may miss important warm-ups, announcements, or team preparations, which can affect their performance and the team as a whole.

## **HAIR, MAKE UP AND COSTUMES**

Students must arrive with hair and make up completed according to SSPA guidelines. Proper presentation is part of the performance and reflects the professionalism of the Troupe. SSPA provides a pre-competition sessions before the first competition of the year to give parents visual instruction on how to complete hair and makeup as required. It is the responsibility of parents to attend these sessions if they require guidance.

Students must arrive with all required costumes, accessories, shoes, and undergarments as outlined by SSPA, including any items needed for touch-ups or adjustments throughout the day.

---

# 2026 TROUPE COMPETITION DATES

Parents will be notified of Troupe competition dates as soon as they become available, usually in Term One of each year. In 2026, we plan to enter 4 Troupes competitions in 2026 - dates TBC

**\*\*\*ALL DATES ARE SUBJECT TO CHANGE\*\*\***

## 2026 FEES

### Term Fees

The charge for the Troupe classes are:

1 x 30min class = \$190 per term (10 weeks)

1 x 60min class = \$240 per term (10 weeks)

**Please note:** No refunds or credits will be given for missed classes or withdrawal from Troupe.

### Costume Fees

Parents are responsible for payment of costume hire fees, which range between \$100 and \$150. This fee covers the hire of the costume for the entire year.

**Important:** All Troupe costumes are hire only and must be returned at the end of each competition season. Parents are responsible for the full cost of any costumes that are not returned or are damaged.

### Troupe Entry Fees

Troupe entry fees vary depending on the competition and can range between \$15 and \$50 per item, per student.

For most Troupe competitions, this fee also includes a competitor pass, which covers theatre access for the student. A small administration fee may also apply, typically between \$5 and \$10. These fees are added at the time of competition entry and are not included in the term fees.